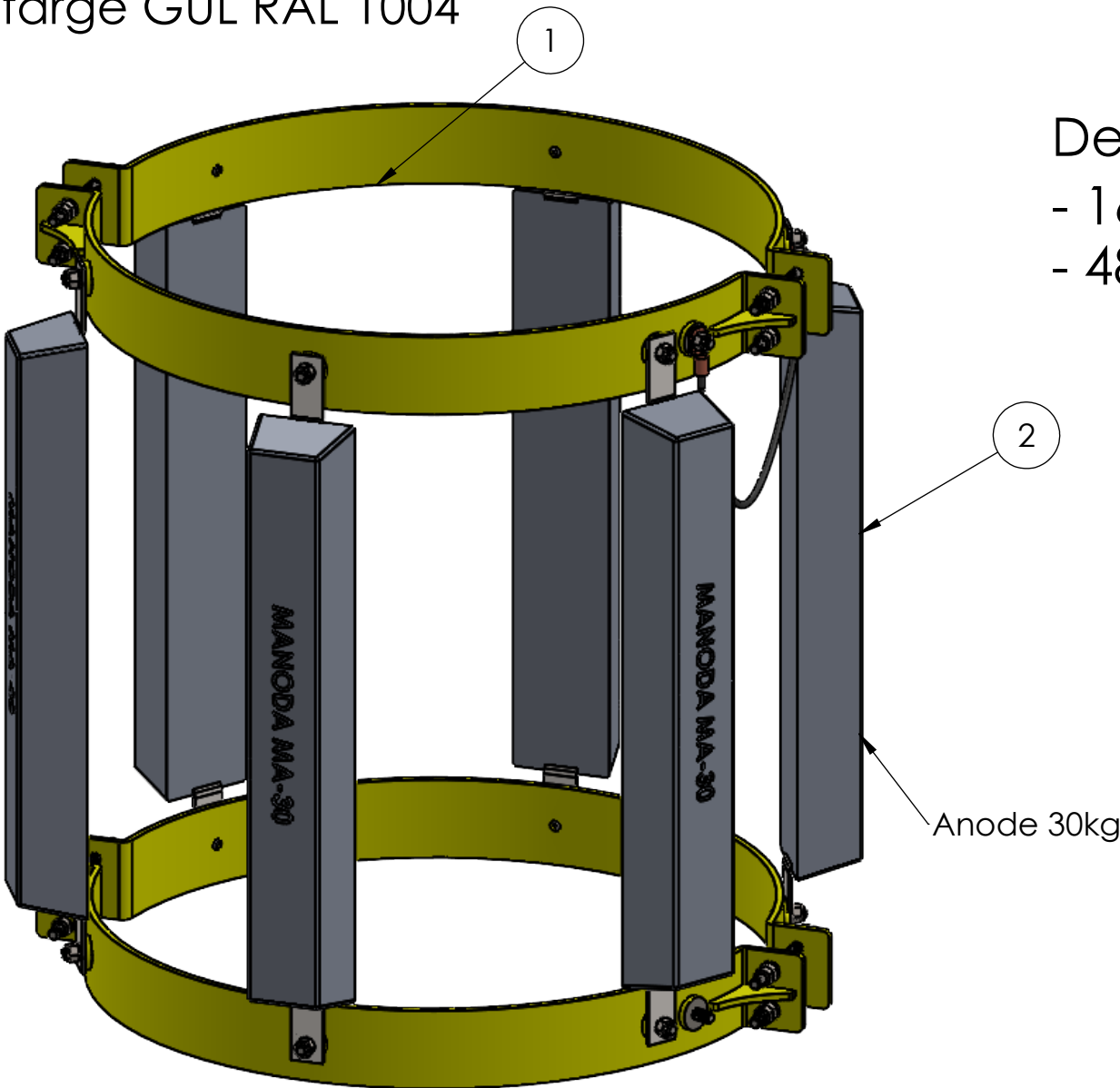


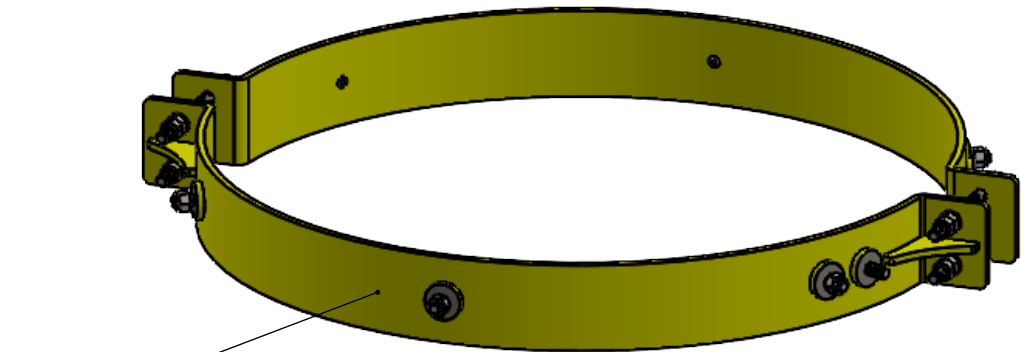
A.7 Coating system no. 7 (shall be pre-qualified)

Application (if not specified under others)	Surface preparation	Coating system (example)	MDFT μm
Submerged carbon steel and carbon steel in the splash zone.	Cleanliness: ISO 8501-1 Sa 2½ Roughness: ISO 8503 Grade Medium G (50 μm to 85 μm , R_{v5})	Two component epoxy Minimum number of coats: 2	350
Submerged stainless steel and stainless steel in the splash zone.	Sweep blasting with non-metallic and chloride free grit to obtain anchor profile of approximately 25 μm to 45 μm .	MDFT of complete coating system:	

Males iht. NORSOK M-501 Sys. no. 7
(Prekvalifisering er ikke nødvendig)
Toppfarge GUL RAL 1004



Komplett anodebank ca. 260kg

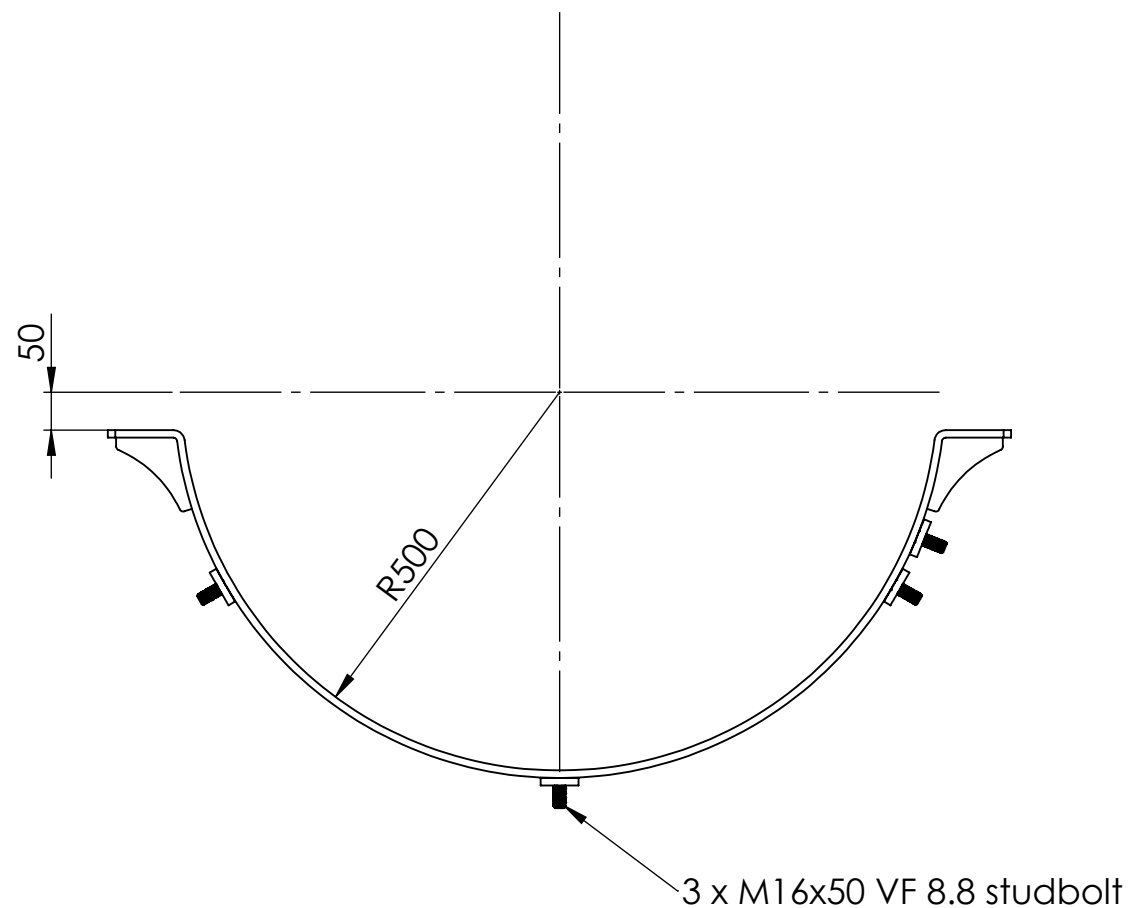
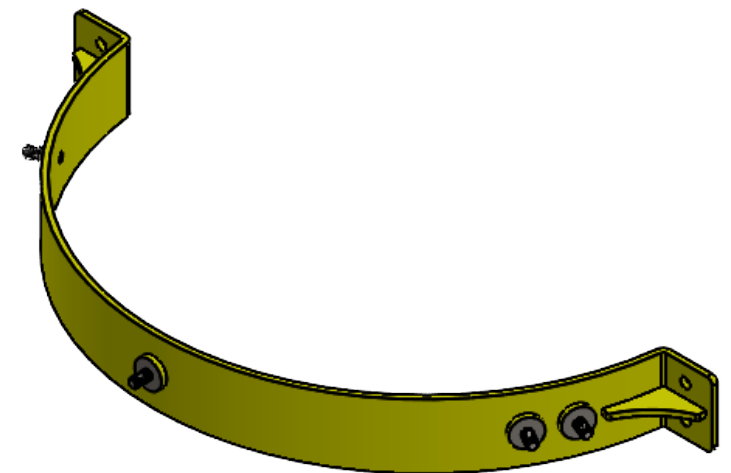
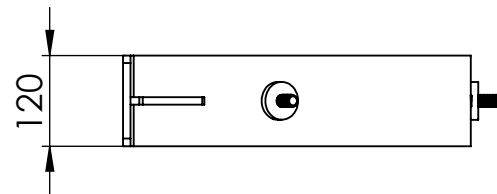
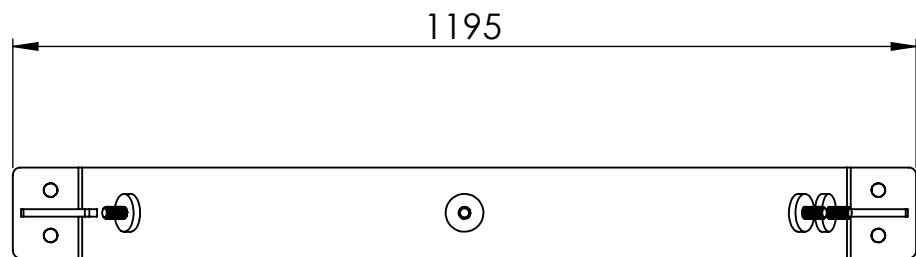


Anodeklammer ca. 30kg

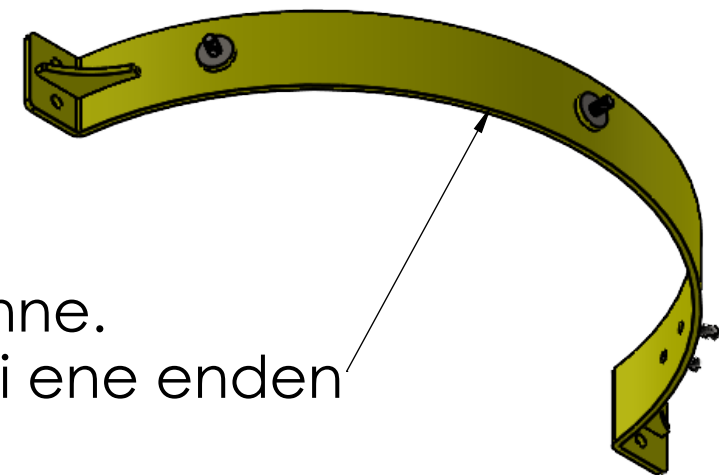
Det skal leveres komplette anodebanker til 8 stk søyler.
- 16 stk av pos 1 anodeklammer
- 48 stk av pos 2 30kg aluminiumsanoder





ITEM NO.	PART NUMBER	DESCRIPTION	QTY.
1	Anodeklammer Ø1000	Stål S355	16
2	553056 Anode MA-30-flush Ø18x26_1040cc	Al-In-Zn	48
3	Kabelsko Ø16		2
4	DIN 6797-A17		2
5	DIN EN ISO 7040 - M16 - N		2
6	Kabel16mm2		1

 Stangnesterterminalen 2 9409 Harstad	MATERIAL: Steel S355		DO NOT SCALE DRAWING	REVISION
	Steel S355Anodebank Ø1000_6x30kg		TITLE: Anodebank Ø1000_6x30kg	
DRAWN	KL	SIGNATURE	DATE	DWG NO.: Anodebank Ø1000_6x30kg WEIGHT: kg SCALE:1:10 SHEET 1 OF 6
CHK'D	FM		24.04.2024	
APPV'D	KL		24.04.2024	
MFG				
Q.A				
				A3

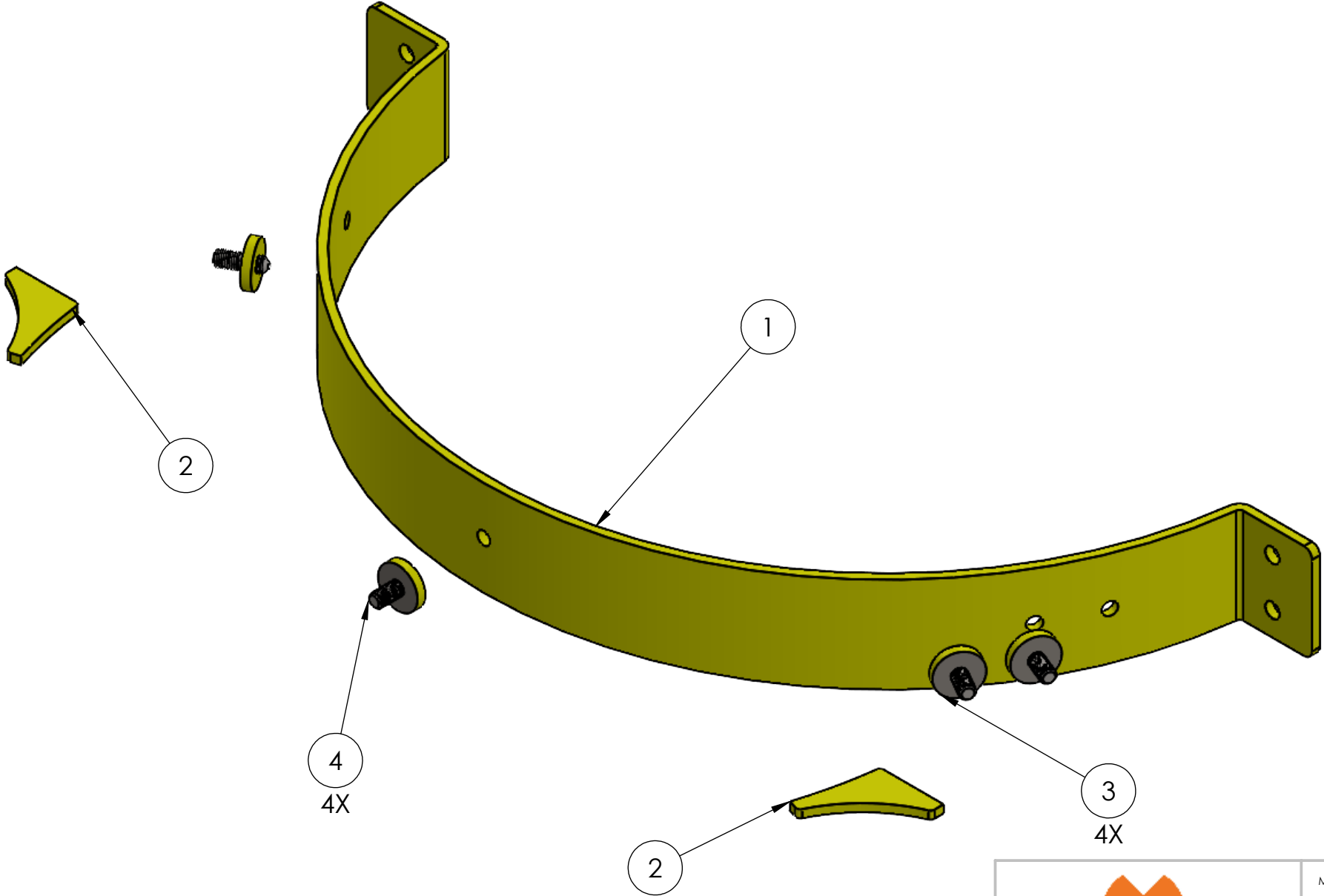




Totalt 32 stk av denne.
16 stk fases 10x45° i ene enden



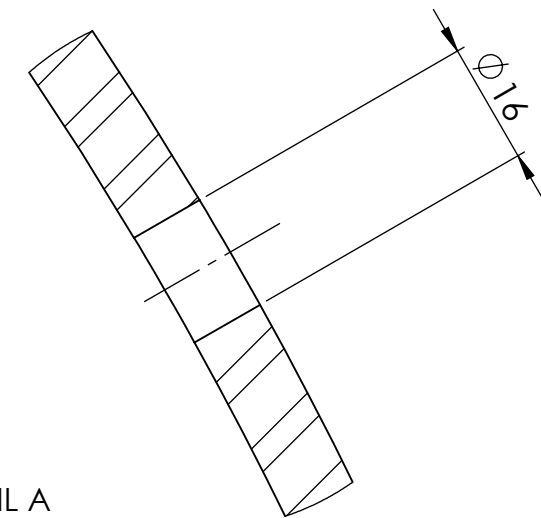
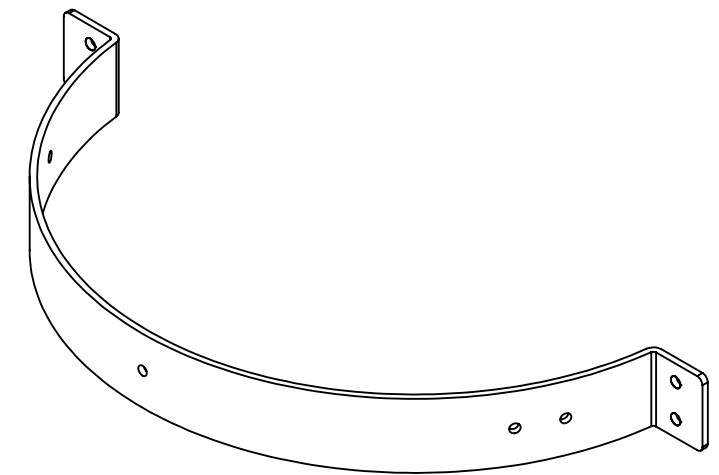
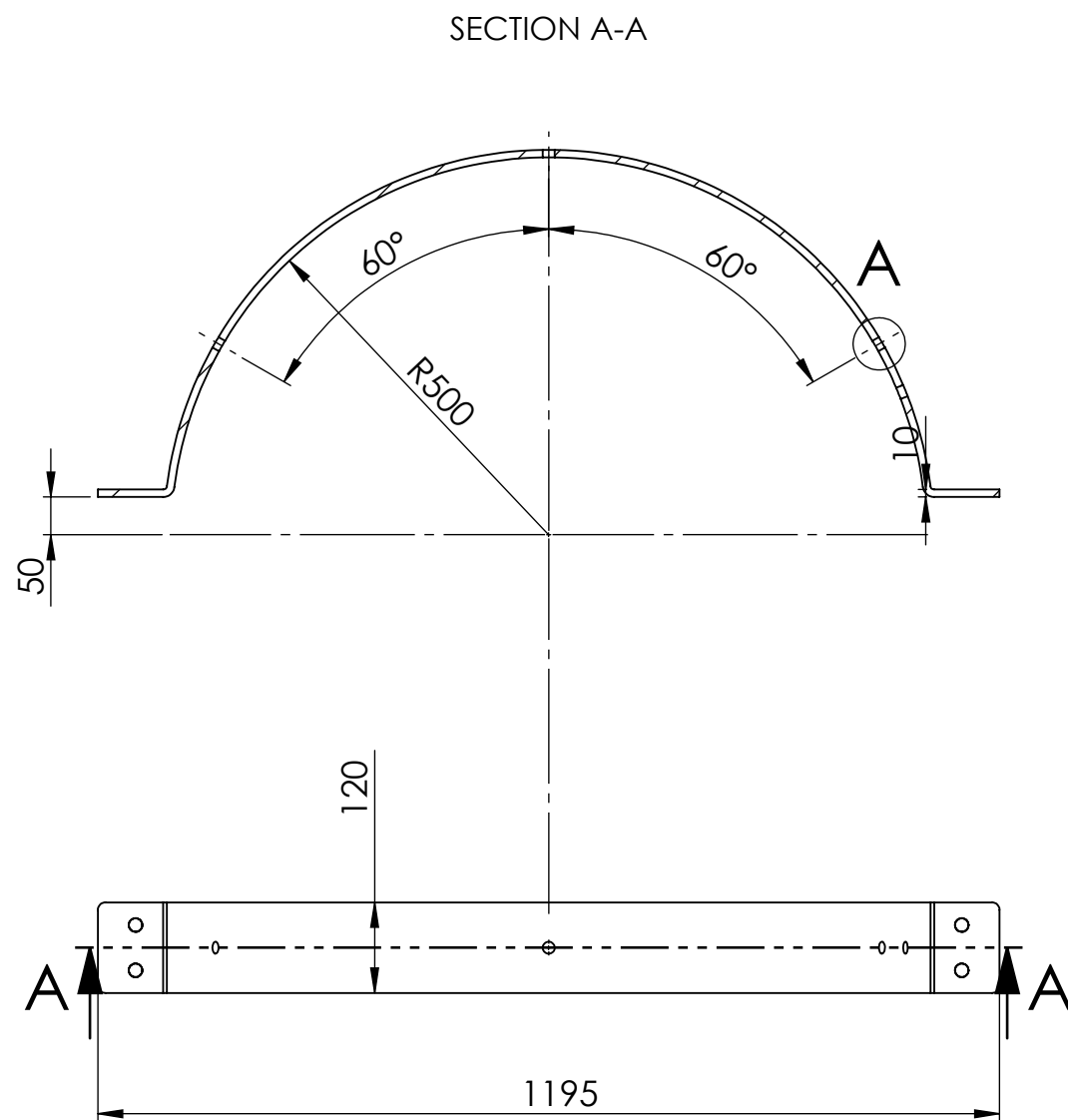
<div> MANODA Stangnesterterminalen 2 9409 Harstad</div> <table><tr><th></th><th>NAME</th><th>SIGNATURE</th><th>DATE</th></tr><tr><td>DRAWN</td><td>KL</td><td></td><td>24.04.2024</td></tr><tr><td>CHK'D</td><td>FM</td><td></td><td>24.04.2024</td></tr><tr><td>APPV'D</td><td>KL</td><td></td><td>24.04.2024</td></tr><tr><td>MFG</td><td></td><td></td><td></td></tr><tr><td>Q.A</td><td></td><td></td><td></td></tr></table>					NAME	SIGNATURE	DATE	DRAWN	KL		24.04.2024	CHK'D	FM		24.04.2024	APPV'D	KL		24.04.2024	MFG				Q.A				MATERIAL: Steel S355		DO NOT SCALE DRAWING	REVISION
					NAME	SIGNATURE	DATE																								
				DRAWN	KL		24.04.2024																								
CHK'D	FM		24.04.2024																												
APPV'D	KL		24.04.2024																												
MFG																															
Q.A																															
Steel S355Anodebank Ø1000_6x30kg				TITLE: Anodebank Ø1000_6x30kg																											
DWG NO.:		Anodebank Ø1000_6x30kg		A3																											
WEIGHT: kg		SCALE:1:10		SHEET 2 OF 6																											

ITEM NO.	PART NUMBER	DESCRIPTION	QTY.
1	Klammer Ø1000_halvdel	S355J2+N eller tilsv.	1
2	Klammer Ø1000_kneplater	S355J2+N eller tilsv.	2
3	Skive Ø50x16x10	S235JR eller tilsv.	4
4	studbolt_M16x50	Gjenget jern,vf. 8.8 Din 976 16x1000	4



<div> MANODA Stangnesterterminalen 2 9409 Harstad</div>			
	NAME	SIGNATURE	DATE
DRAWN	KL		24.04.2024
CHK'D	FM		24.04.2024
APPV'D	KL		24.04.2024
MFG			
Q.A			

MATERIAL:	Steel S355	DO NOT SCALE DRAWING	REVISION
Steel S355Anodebank Ø1000_6x30kg			
TITLE: Anodebank Ø1000_6x30kg			
DWG NO.: Anodebank Ø1000_6x30kg			A3
WEIGHT: kg	SCALE:1:10		SHEET 3 OF 6

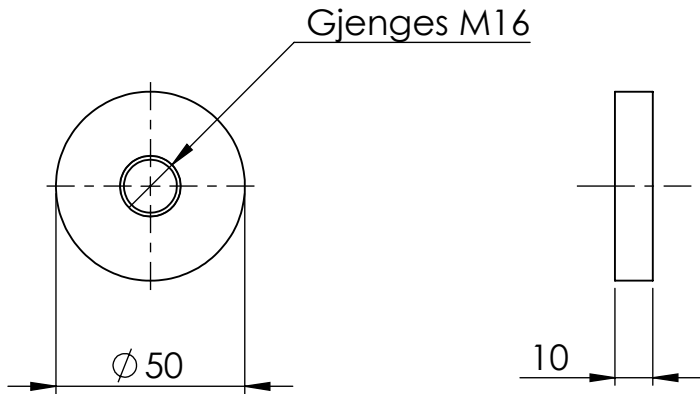
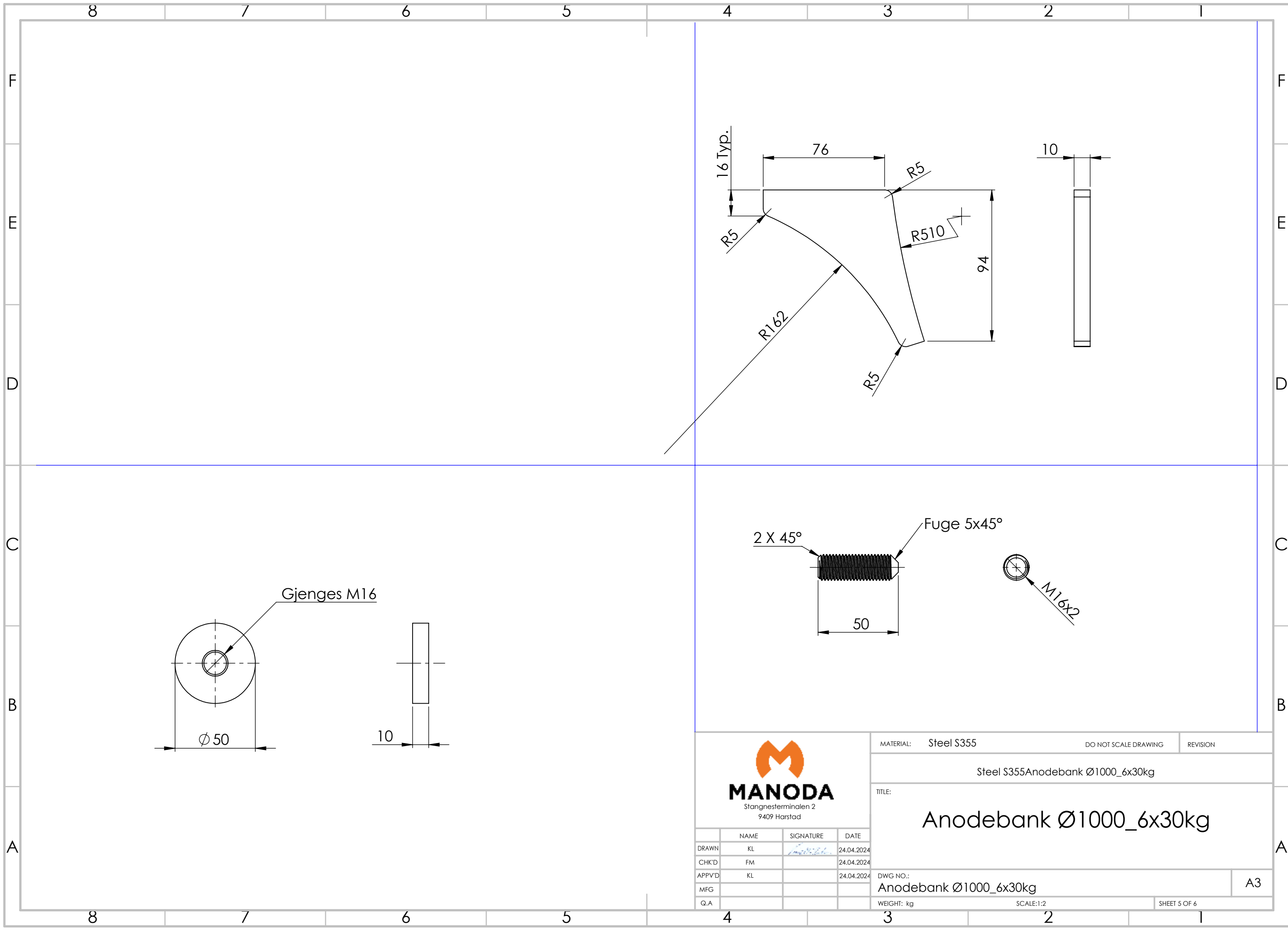


DETAIL A
SCALE 1 : 1



	NAME	SIGNATURE	DATE
DRAWN	KL		24.04.2024
CHK'D	FM		24.04.2024
APPV'D	KL		24.04.2024
MFG			
Q.A			

MATERIAL: Steel S355		DO NOT SCALE DRAWING	REVISION
Steel S355Anodebank Ø1000_6x30kg			
TITLE: Anodebank Ø1000_6x30kg			
DWG NO.: Anodebank Ø1000_6x30kg			A3
WEIGHT: kg		SCALE:1:10	SHEET 4 OF 6





MANODA
Stangnesterterminalen 2
9409 Harstad

	NAME	SIGNATURE	DATE
DRAWN	KL		24.04.2024
CHK'D	FM		24.04.2024
APPV'D	KL		24.04.2024
MFG			
Q.A			

MATERIAL: Steel S355

DO NOT SCALE DRAWING

REVISION

Steel S355Anodebank Ø1000_6x30kg

TITLE:

Anodebank Ø1000_6x30kg

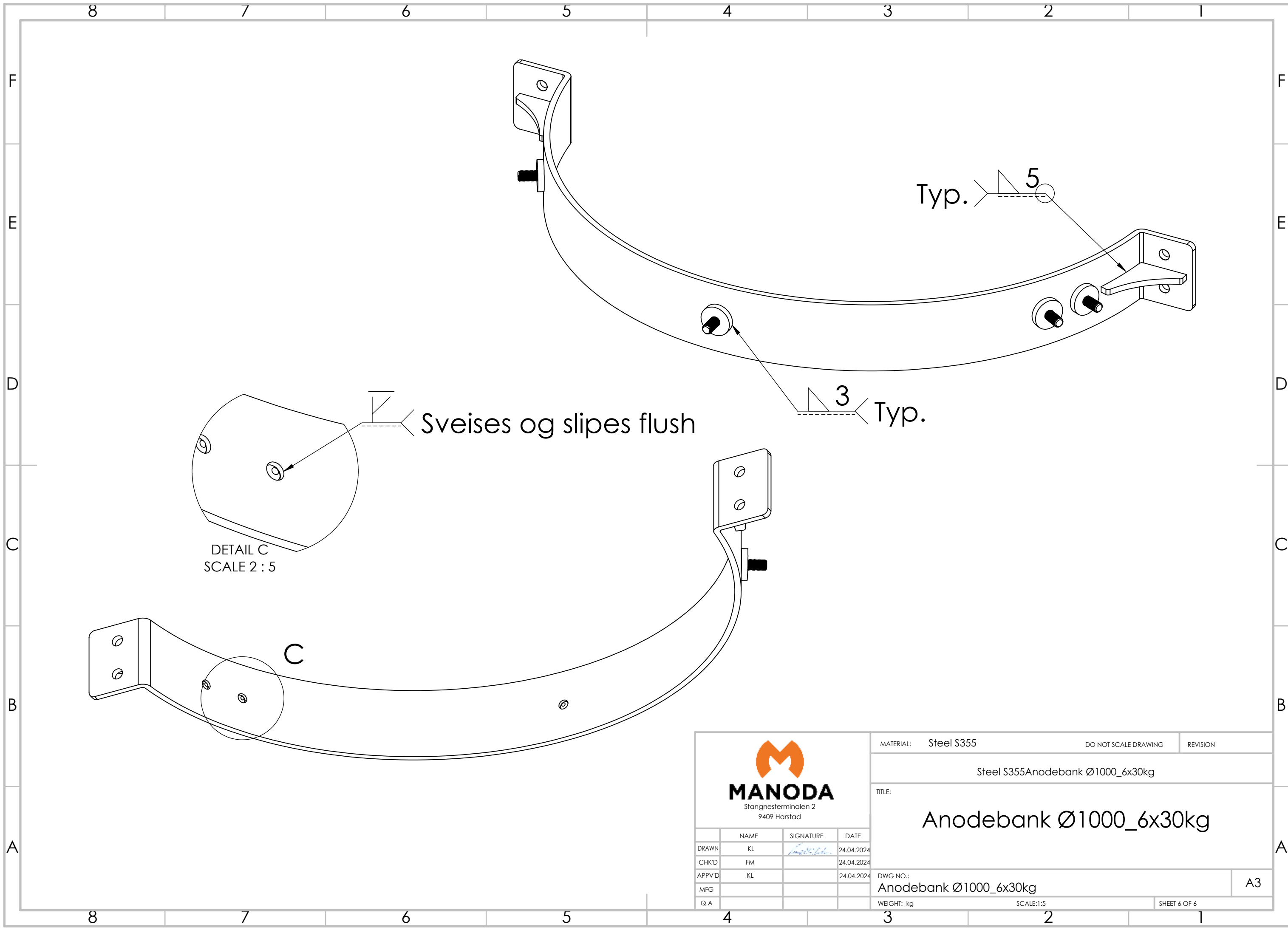
DWG NO.: Anodebank Ø1000_6x30kg


WEIGHT: kg

SCALE:1:2


SHEET 5 OF 6

A3





MANODA
Stangnesterminalen 2
9409 Harstad

	NAME	SIGNATURE	DATE
DRAWN	KL		24.04.2024
CHK'D	FM		24.04.2024
APPV'D	KL		24.04.2024
MFG			
Q.A			

MATERIAL:	Steel S355	DO NOT SCALE DRAWING	REVISION
Steel S355Anodebank Ø1000_6x30kg			
TITLE: Anodebank Ø1000_6x30kg			
DWG NO.: Anodebank Ø1000_6x30kg			A3
WEIGHT: kg	SCALE:1:5		SHEET 6 OF 6